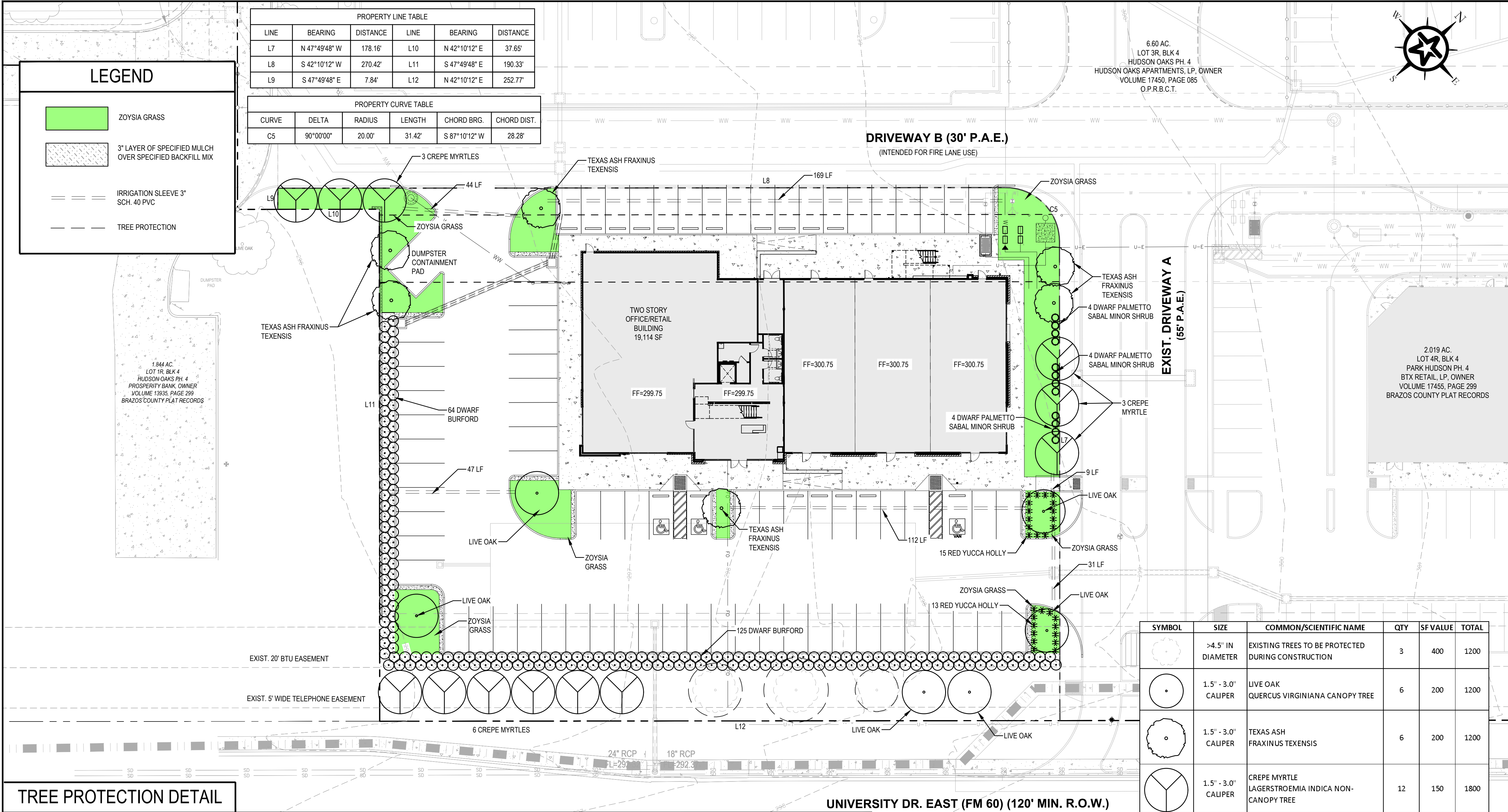


G:\PROJECTS\4-01139\2 ENGINEERING\2.0 CAD\4-01139-09C-LAND.DWG, L100 LANDSCAPE PLAN AND ANALYSIS, 12/10/2025 10:15:23 AM, cschroeder



**GENERAL NOTES**

- ALL LANDSCAPING SHALL BE IRRIGATED BY AN UNDERGROUND SPRINKLER SYSTEM.
- TO ENSURE THE GROWTH OF TREES IN END ISLANDS, A MINIMUM 24-INCH SOIL DEPTH AND 250 CUBIC FEET OF APPROXIMATE PLANTING MEDIUM IS REQUIRED PER TREE, WITH TOPSOIL MOUNDED TO A CENTER HEIGHT.
- SCREENING SHRUBS SHALL HAVE A DENSE SHRUBBERY OR BE A HEDGE HAVING YEAR-ROUND FOLIAGE. SHRUBS ARE TO BE PLANTED IN A LANDSCAPE STRIP OF AT LEAST SIX FEET IN WIDTH ARRANGED IN AN ALTERNATING/STAGGERED PATTERN FORMED BY TWO ROWS, TWO FEET APART ON CENTER, EACH OF WHICH IS MADE UP OF SHRUBS THREE FEET ON CENTER. AT THE TIME A REQUEST FOR A CERTIFICATE OF OCCUPANCY IS MADE, SHRUBS AND HEDGES SHALL BE AT LEAST THREE FEET IN HEIGHT.

**DESCRIPTION AND ACERAGE**

1.354 AC. LOT 5R, BLK 4, PARK HUDSON PH. 4  
DAVILA RICARDO REYNA, OWNER, VOLUME 19494, PAGE 144  
BRAZOS COUNTY PLAT RECORDS

0 5 10' 20' 40'  
GRAPHIC SCALE

ISSUE	DESCRIPTION	DATE

**Walker Partners**  
engineers | surveyors  
T.B.P.E. Registration No. 8053

**RNL HOMES**

**RNL HOMES OFFICE HEADQUARTERS**

**LANDSCAPE PLAN AND ANALYSIS**

12/10/2025  
DATE

Lee C. Schroeder, P.E.  
LEE C. SCHROEDER, III  
149026  
PROFESSIONAL ENGINEER

DESIGNED BY: LCS  
DRAFTED BY: LCS/HBS  
CHECKED BY: DPS  
REVIEWED BY: DPS  
PROJECT NO: 4-01139.09  
DRAWING NO: **L101**  
SHEET OF